



SUBMITTAL DRAWING
HDCD82R
HEAVY DUTY ROUND CONTROL DAMPERS

STANDARD CONSTRUCTION

MINIMUM SIZE

4" dia.

MAXIMUM SIZE

60" diameter

AXLES

Continuous, plated steel axle, angle reinforced as required. See table below for axle dia.

CONTROL SHAFT

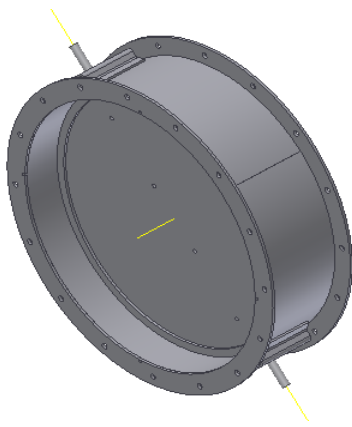
Axle extends 6" from frame.

BEARINGS

Grease lubricated ball bearings bolted to frame.

BLADE STOP

1/2" X 1/4" Steel bar on dampers under 17" in dia. 1/2"x 1/2" steel bar on damper 17" in dia. and larger.



FINISH

Aluminum paint with some parts mill.

FRAME

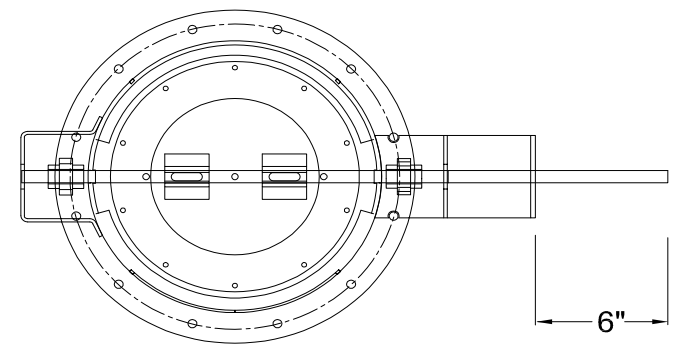
Steel channel

BLADES

Steel, stiffened as required.

MAXIMUM TEMPERATURE

250 deg. F is standard



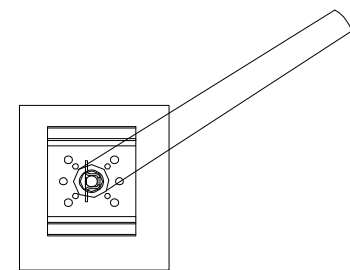
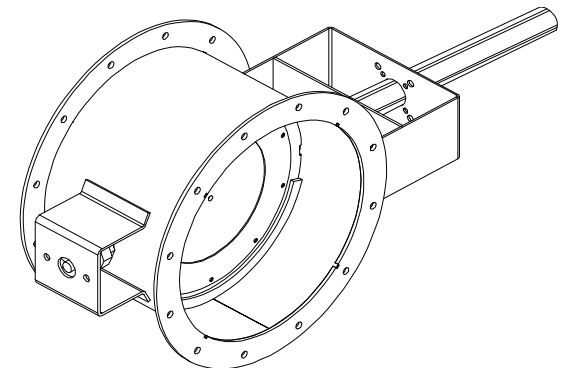
OPTIONAL BOLT HOLES AS SHOWN

S=HOLES STRADDLE AXLE (SHOWN)

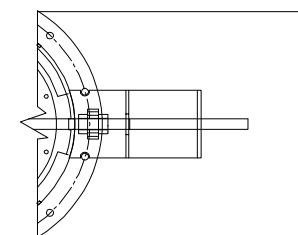
M=DIAMETER OF HOLES

H= NUMBER OF HOLES (EVEN NUMBER ONLY)

T= HOLES PARALLEL WITH AXLE O (NOT SHOWN)



HAND QUADRANT



OUT BOARD BEARINGS
W / SHAFT SEALS (OPT)

Inside diameter (D)		Blade Thickness	Axle Diameter	Frame	
Above	Through			Flange (F)	Web (C)
4"	7 3/4"	10 ga.	1/2"	1 1/4" x 10 ga.	6"x 10 ga.
7 3/4"	11 3/4"	10 ga.	1/2"	1 1/4" x 10 ga.	8"x 10 ga.
11 3/4"	14"	10 ga.	1/2"	1 1/2" x 10 ga.	8"x 10 ga.
14"	24"	10 ga.	3/4"	1 1/2" x 1/4"	8"x 10 ga.
24"	42"	3/16"	3/4"	2 " x 1/4"	8" x10 ga.
42"	48"	3/16"	1"	2" x 1/4"	8" x10 ga.
48"	60"	1/4"	1"	2 1/2" x 5/16"	8" x 3/16"

FRAME	BLADES	SEALS
Steel channel	Steel stiffened as required	Silicone 400 deg F (204 deg C) Blade seal
304 Stainless steel (OPT)		

BEARINGS	AXLE	ACCESSORIES (OPT)
Sleeve press inset	Plated continous 6" extension beyond frame	Bolt holes in 1 flange
Bolted to frame (Opt)		Bolt holes in both flanges
Bolted to frame W/ shaft seals (OPT)	304 Stainless steel (OPT)	Manual actuator no.
Mounted to frame W/shaft seals (OPT)		Manual actuator cl.
		Electric actuator
		Pneumatic actuator

Project:
Location:
Architect
Engineer:

Contractor:
Address:
P.O. Number:
Date: