



SUBMITTAL DRAWING

HDRCD300

HEAVY DUTY ROUND DAMPERS

STANDARD CONSTRUCTION

MINIMUM SIZE

HDRCD300 - 4" diameter

MAXIMUM SIZE

HDRCD300 - 40" diameter

TEMPERATURE LIMIT

250 deg. F is standard.

WHEATHER STRIP STOPPER

FINISH

A1- Aluminum Paint

ACTUATOR

LF24US

BEARINGS

Stainless Steel sleeve, pressed into frame

FRAME

Dampers under 6" - 6" x 12 ga. steel tube.

Dampers 6" to 12" - 6" x 1/2" x 14 ga. steel channel

Dampers above 12" and thru 24" - 6" x 1/2" x 1/8" steel channel

Dampers above 24" - 6" x 1" x 3/16" steel channel

BLADES

Dampers 18" A or D dim. And under - 12 ga. Steel

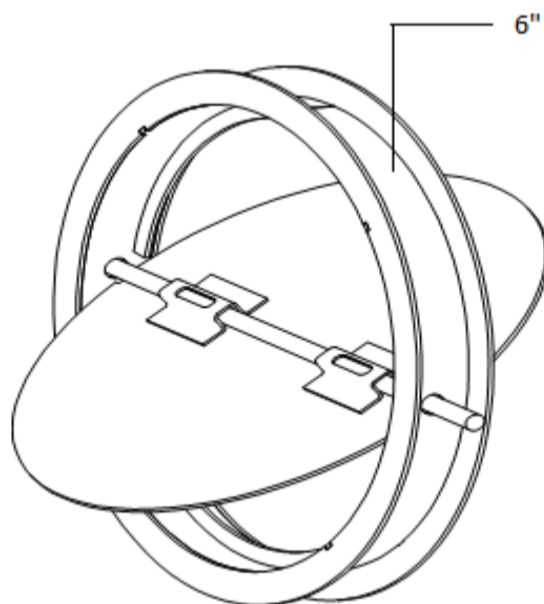
Dampers above 18" A or D dim. - 10 ga. Steel equivalent thickness. Stiffeners are required.

DRIVE PIN

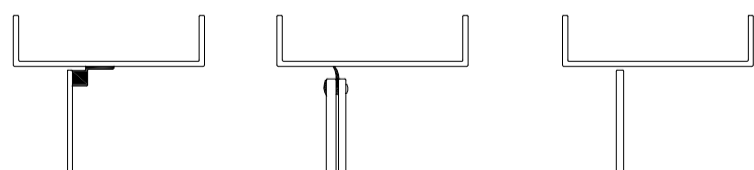
3/4" Axle

OPTIONS:

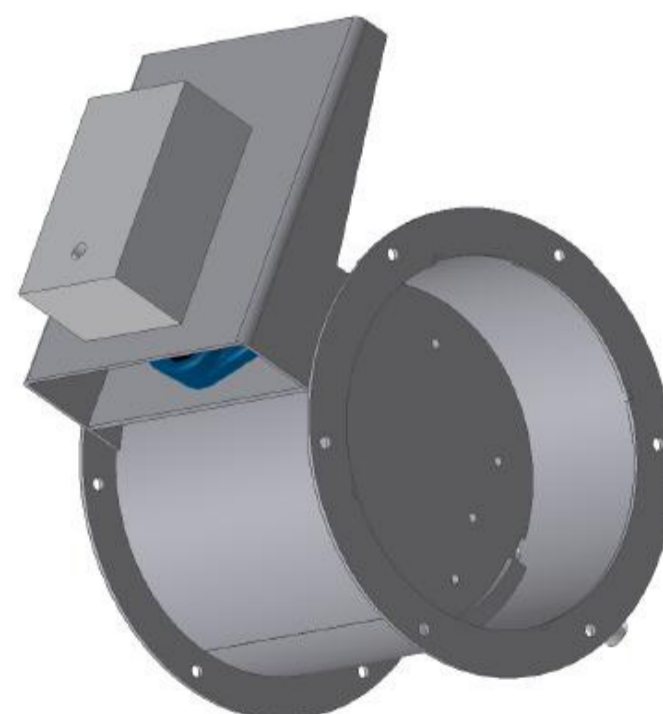
- Crank Arm 1/2" Axle
- Crank Arm 3/4" Axle
- Hand Quadrant for 1/2" axle
- Hand Quadrant for 3/4" axle
- 304 Stainless Steel Construction
- Stainless Steel Axles
- Neoprene Blade Seals
- Silicone Blade Seals



6" Extended Shaft



BLADE / FRAME SECTIONS



DAMPER C/W MOTOR

Project:
Location:
Architect
Engineer:

Contractor:
Address:
P.O. Number:
Date: